

Libellula.CAD

The new frontier in designing 3D models

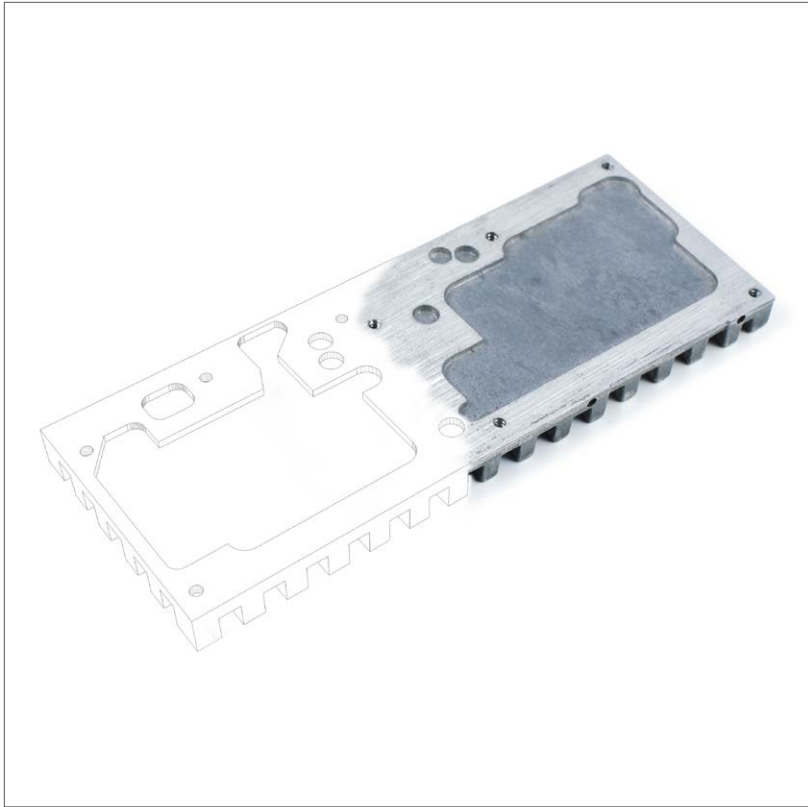


Libellula®
Cutting The Edge Of Software Everyday

Software line



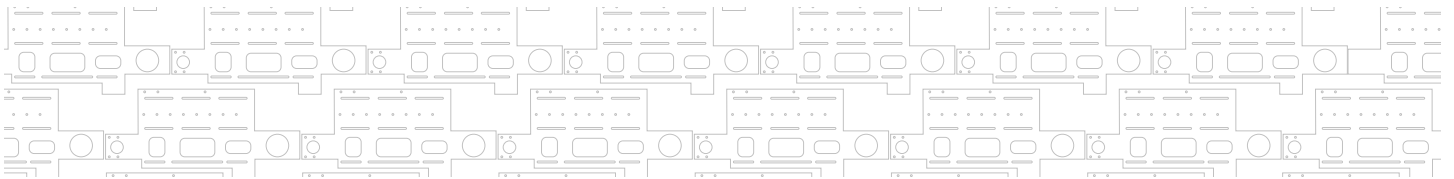
From CAD 3D to the
plan development



The supreme evolution of design

Belonging to the Libellula suite Universe, Libellula.CAD itself is a powerful software and able to create high-precision 3D models.

Designed in accordance with Libellula's unique philosophy, it implies the absolute immediacy of operations: a few moments are sufficient to import files or entire nesting procedures to be sent to the sheet metal processing software such as Libellula.CUT.

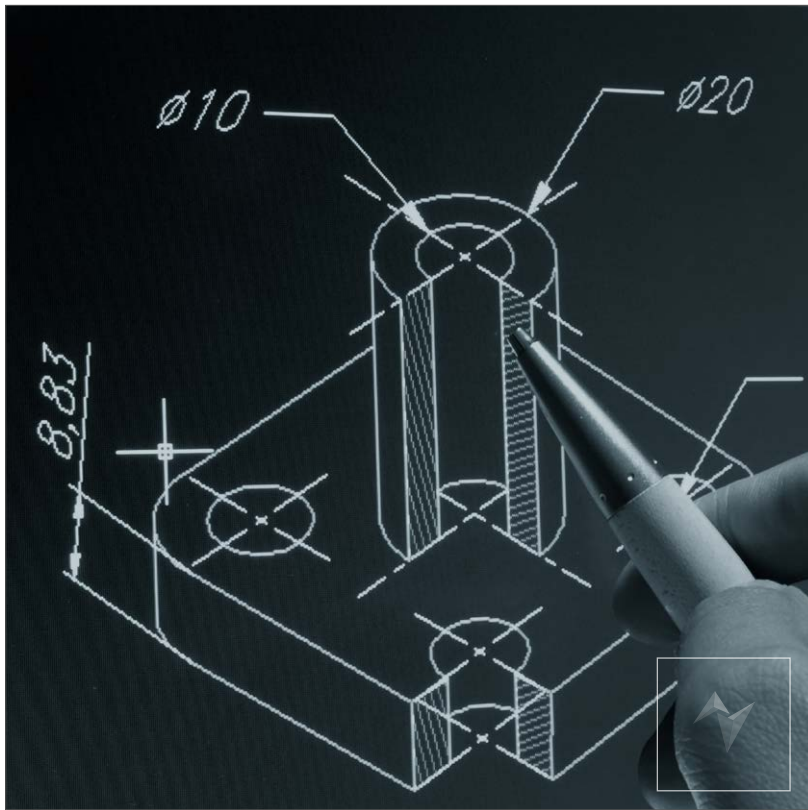


Intelligent shape analyser is fully integrated into the Libellula software environment

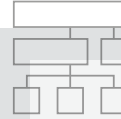
- ✦ The ISA - Intelligent Shape Analyzer - developed by Libellula engineers, analyzes the model developed by Libellula.CAD, sectioning into parts and finding the optimal parameters
- ✦ From Libellula.CAD, the model then passes to the UNFOLD module, which develops in a plan the 3D model: transformed into plan the project is automatically sent to the Libellula.CUT cutting software

Modelling in mixed techniques

With Libellula.CAD you can design models with different techniques: ruled surfaces, conical, smooth join protrusions, cylinders, boxes, elliptical plans giving life to a three-dimensional object immediately ready to be processed in the machine.



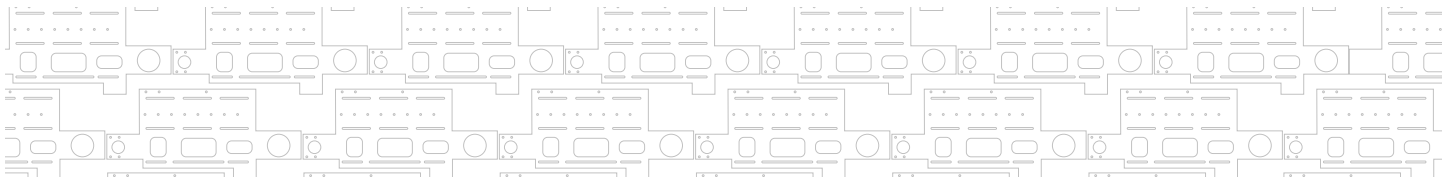
Libellula.CAD



CREATING 2D AND 3D MODELS IN A FEW
SIMPLE STEPS THANKS TO THE
"ONE-CLICK" LIBELLULA PHILOSOPHY



DESIGN MODELS
WITH ANY TECHNIQUE



Technical Features



- ✔ Creating 2D and 3D models
- ✔ Production documentary tables of advanced dimensioning and variables
- ✔ Models and parameters management
- ✔ Set Shot Peening
- ✔ Automatic calculation of the developments for pipes, extrusions and beams
- ✔ Photo editing 3D models
- ✔ Import of 2D and 3D special models in the formats STEP, AP 203/ AP214, Parasolid, SAT/ACIS and standard models in the formats set, STL, VDA AND IGES
- ✔ Import of 2D specials



Microsoft Partner
Silver Application Development

Libellula S.r.l. - Headquarters

Via Savigliano 6/B/1 - 12062 Cherasco (CN) - Italy | Tel. +39 (0) 172 491834 - contact@libellula.eu

www.libellula.eu

